



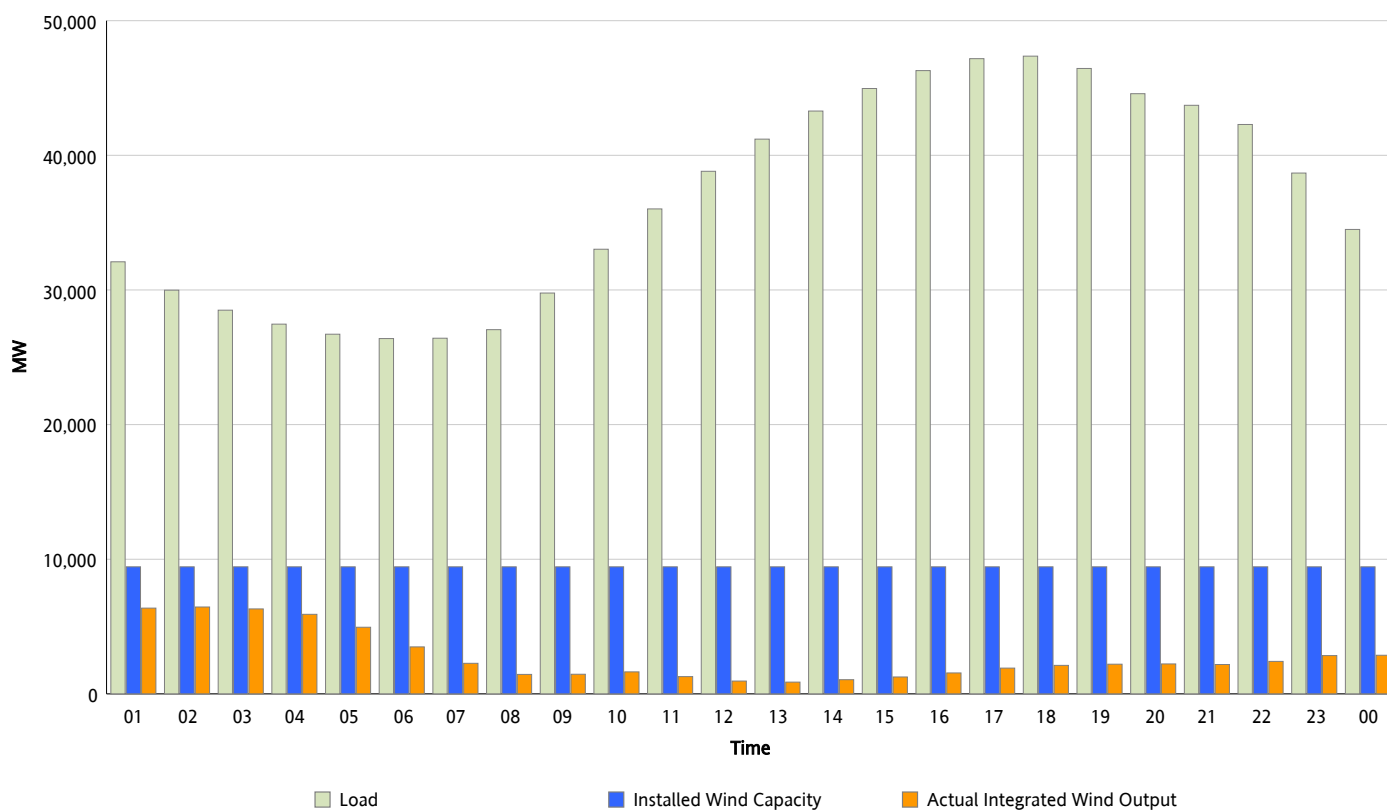
## ERCOT Grid Operations

### Wind Integration Report : 05/20/2012

Peak Load	47,366 MW
Load Peak Hour (HE)	18
Wind Over Peak	2,117 MW
Wind Record 04/13/12	7,925 MW
Max Wind Value*	6,713 MW
Wind Peak Time	00:08
Wind Integration %	20.4 %

#### Hourly Average Actual Load vs. Actual Wind Output

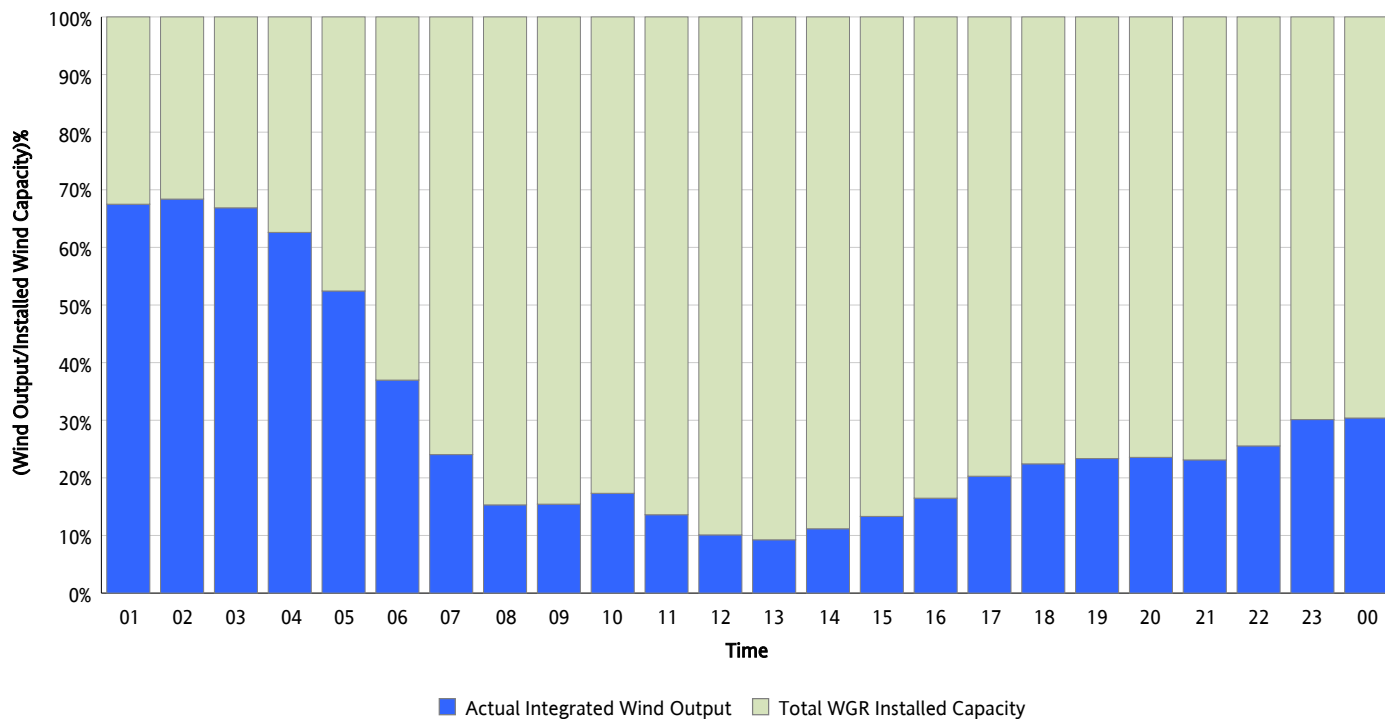
05/20/2012



\* Wind Record and Wind Max represent instantaneous values and the rest of the values are integrated over the hour

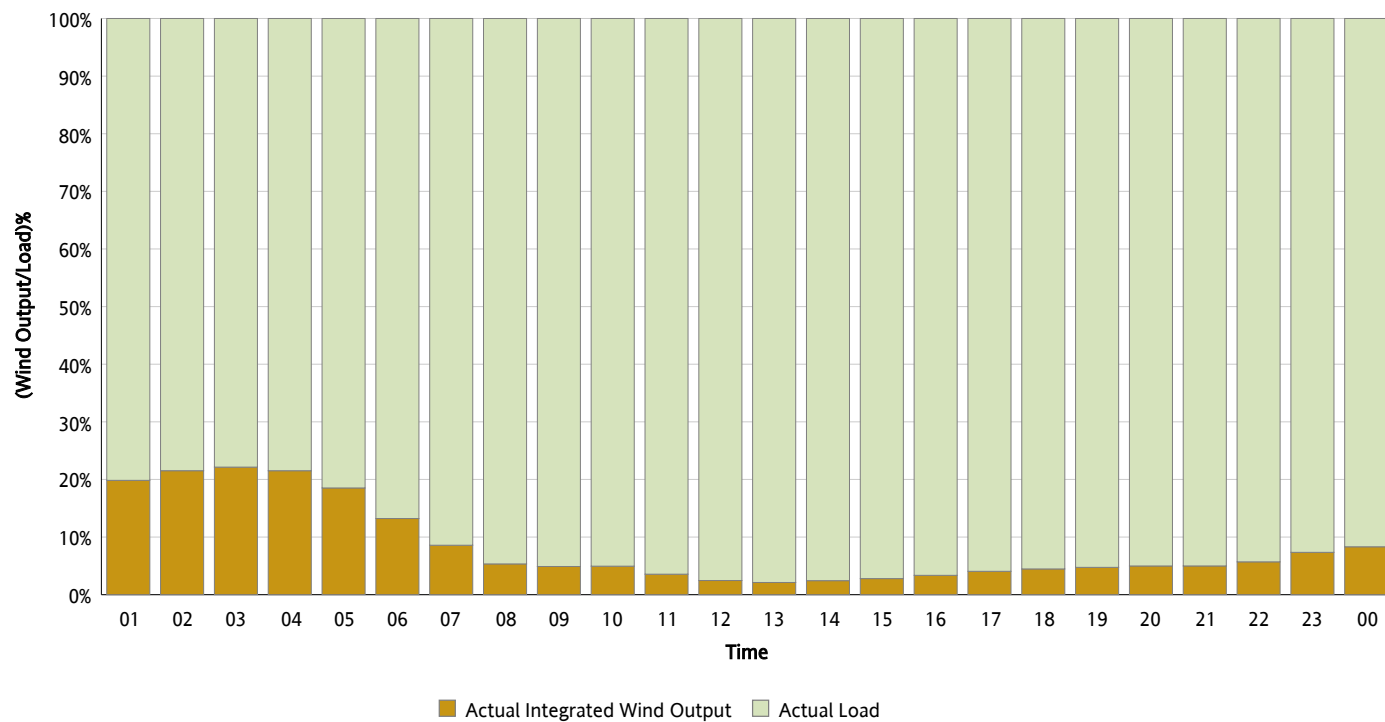
## Actual Wind Output as a Percentage of the Total Installed Wind Capacity

05/20/2012



## Actual Wind Output as a Percentage of the ERCOT Load

05/20/2012



## ERCOT Load vs. Actual Wind Output

05/13/2012 - 05/20/2012

